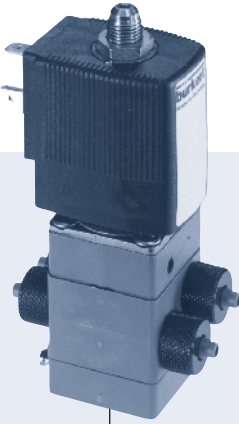
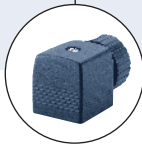


## 4/2-way Solenoid Valve for pneumatic systems



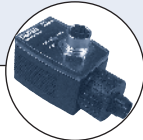
Type 5420 can be combined with...



**Type 2508**  
Cable plug






**Type 1078**  
Timer unit



**Type 2512/2511**  
ASI cable plug



**Type 2000**  
Angle-seat valve

- Compact design
- Push-over solenoid coil
- Exhaust air can be regulated
- Tube, threaded and sub-base connections
- Servo-diaphragm seat discs
- Approvals:   

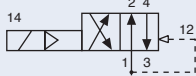
The Type 5420 is a pilot-controlled 4-way seat valve with servo-diaphragms. A minimum differential pressure of 36.25 PSI is needed for switch-over. The valve can be mounted on two-channel manifolds with a common pressure supply.

Technical data	
<b>Orifice</b>	DN 3.0 mm
<b>Body material</b>	Polyamide
<b>Valve internals</b>	Stainless steel, plastic
<b>Seal material</b>	NBR
<b>Media</b>	Neutral media
<b>Media temperature</b>	14°F to 140°F (-10°C to +60°C)
<b>Ambient temperature</b>	Max. 131°F (+55°C)
<b>Voltage tolerance</b>	±10%
<b>Duty cycle</b>	100% continuous rating
<b>Electrical connection</b>	Tag connector according to DIN EN 175301-803 (previously DIN 43650) Form A for cable plug Type 2508
<b>Protection class</b>	IP 65 with cable plug
<b>Installation</b>	As required, preferably with actuator upright

Power consumption		
Inrush AC [VA]	Hold	
	AC [VA/W]	DC [W]
11	6/2	2

Ordering chart for valves (other versions on request)

Corrosion-resistant body in polyamide, with coil AC10 (32 mm), 2W, seal material NBR, without cable plug

Circuit function	Port connection 1 and 3	Port connection 2 and 4	Orifice [mm]	Q <sub>Nn</sub> value air [l/min]	Pressure range [PSI]	Item no. per voltage/frequency [V/Hz]			
						024/DC	024/60	120/60	240/60
<b>G</b> 4/2-way valve 	NPT 1/8	NPT 1/8	3.0	200	36.25 - 145	456 954	456 955	456 956	456 957
	Flange for manifold	NPT 1/8	3.0	200	36.25 - 145	456 950	456 951	456 952	456 953

A pressure difference of 36.25 PSI (2.5 bar) is necessary for switch-over.

Please note that the cable plug has to be ordered separately, see separate datasheet for Type 2508.

**i** Further versions on request

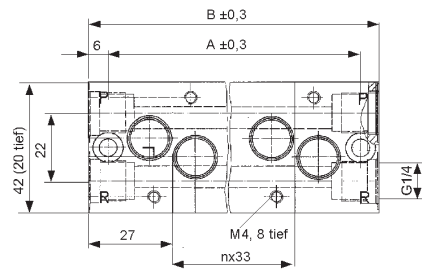
 Approvals  
EEx m II C T5

Ordering chart for accessories (manifold). Expandable manifolds from light metal (aluminium)

Manifold	Hole spacing A [mm]	Total length B [mm]	Item no.
2 valves	75	87	005 356
3 valves	108	120	005 357
4 valves	141	153	005 372
5 valves	174	186	005 373
6 valves	207	219	005 374
8 valves	273	285	006 553

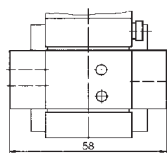
Accessories for manifolds	
Silencer	005 424
Blanking plug for unused ports 1 or 4	005 390
Covering plate, complete, for unused valve positions on the manifolds	005 432
Connector nipple with O-ring for connecting manifold	005 049



Dimensions [mm]

Tube connection for semi-soft plastic tubes (outer-Ø 6 mm, inner-Ø 4 mm).

For battery mounting, the union nuts on the Ports 1 and 3 are replaced by O-rings (10 x 2).



Thread port NPT 1/8

